



SUN FAST SPRING CUP

ISLAND SAILING CLUB

ORGANISING AUTHORITY

9 JUNE 2023

SAILING INSTRUCTIONS

The Sailing Instructions will consist of the Instructions in RRS Appendix S, Standard Sailing Instructions and supplementary Sailing Instructions.

Supplementary Sailing Instructions

1. Signals ashore will be displayed on the Island Sailing Club flagpole located on the top terrace.

2 Schedule of races.

Day	Date	Warning Signal	Start
FRIDAY	9 th JUNE 2023	10.25	1030
FRIDAY	9 th JUNE 2023	12.55	1300

On Friday 9th June 2023 no warning signal will be made after 15.00

3 The marks

Courses will use race marks as identified on the **Racing Marks lists**.

Course announcements will use the 2-digit designations.

4 Start Line

- a. The Start line is the extension of a line through the two club flag staffs, each bearing an orange panel with a black cross.
- b. The Outer Distance Mark (ODM) is Trinity House Buoy.
- c. The Inner Distance Mark (IDM) is the North Cardinal Buoy at the western end of the Cowes Outer Breakwater. Boats should be aware of shallow water and rocky seabed to the south. When starting, boats shall pass between the ODM and IDM.

5 Finish line

The Finish Line, which is not the same as the start line, is defined as the line between the Island Sailing Club Rear Flagstaff and Snowden Buoy.

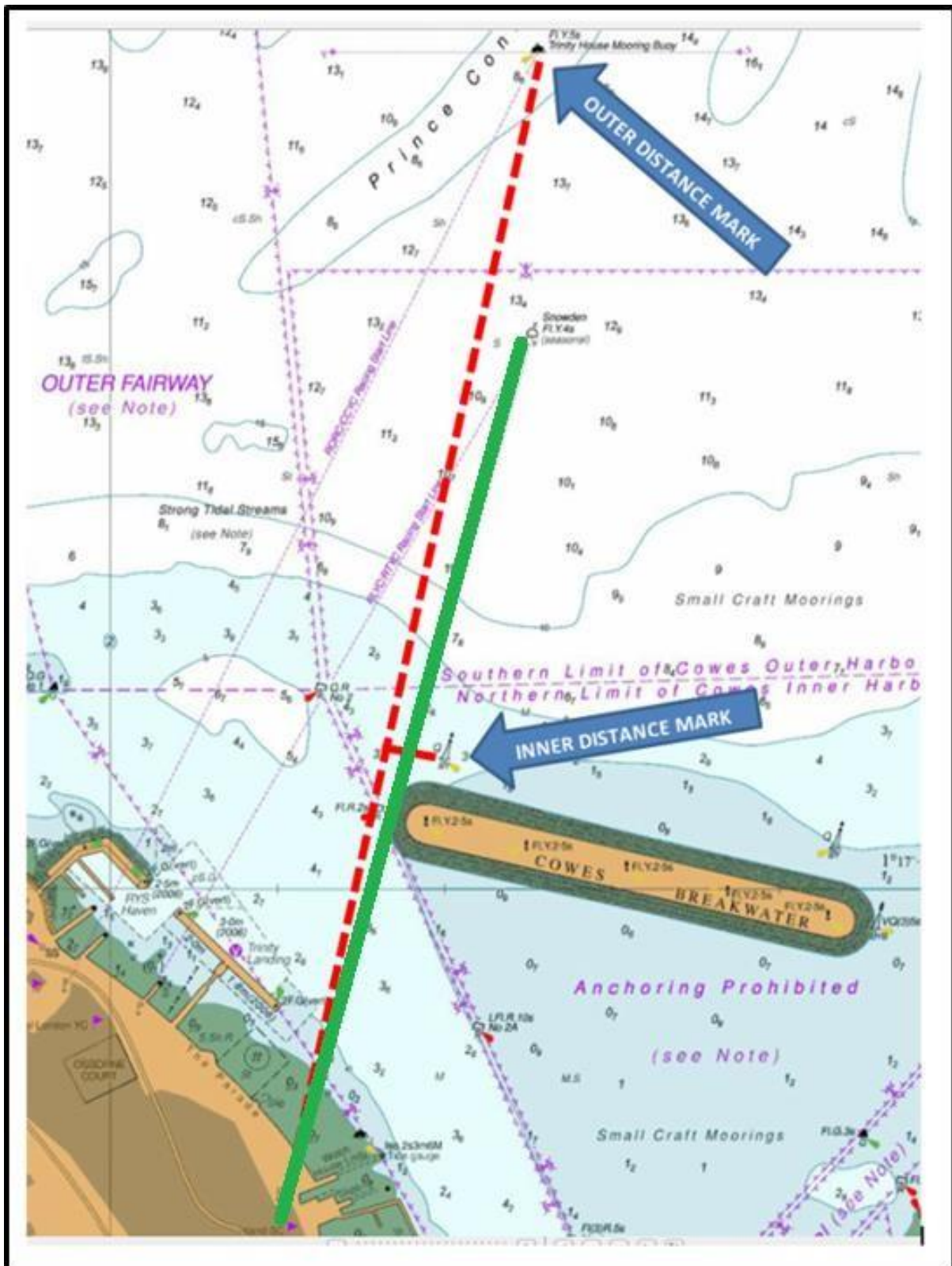
6. Notice Board

Located at <https://landingpage.sea-ventures.co.uk/2023-sun-fast-spring-cup>

7. Communication

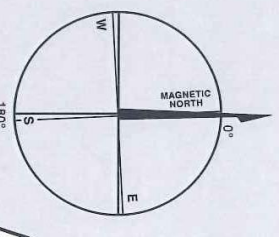
Radio communications with competitors afloat will be made on Channel 37A(M1)

The Race Committee call sign will be "Island Race Control"

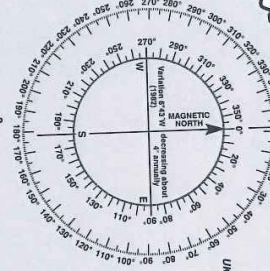


Competitors are to refer to, and comply with, all Harbour Authority Local Notices to Mariners (LNTM), General Directions and byelaws. See: <https://www.islandsc.org.uk/racing/racedocuments>

FOR GUIDANCE ONLY
(Not a Sailing Instruction)



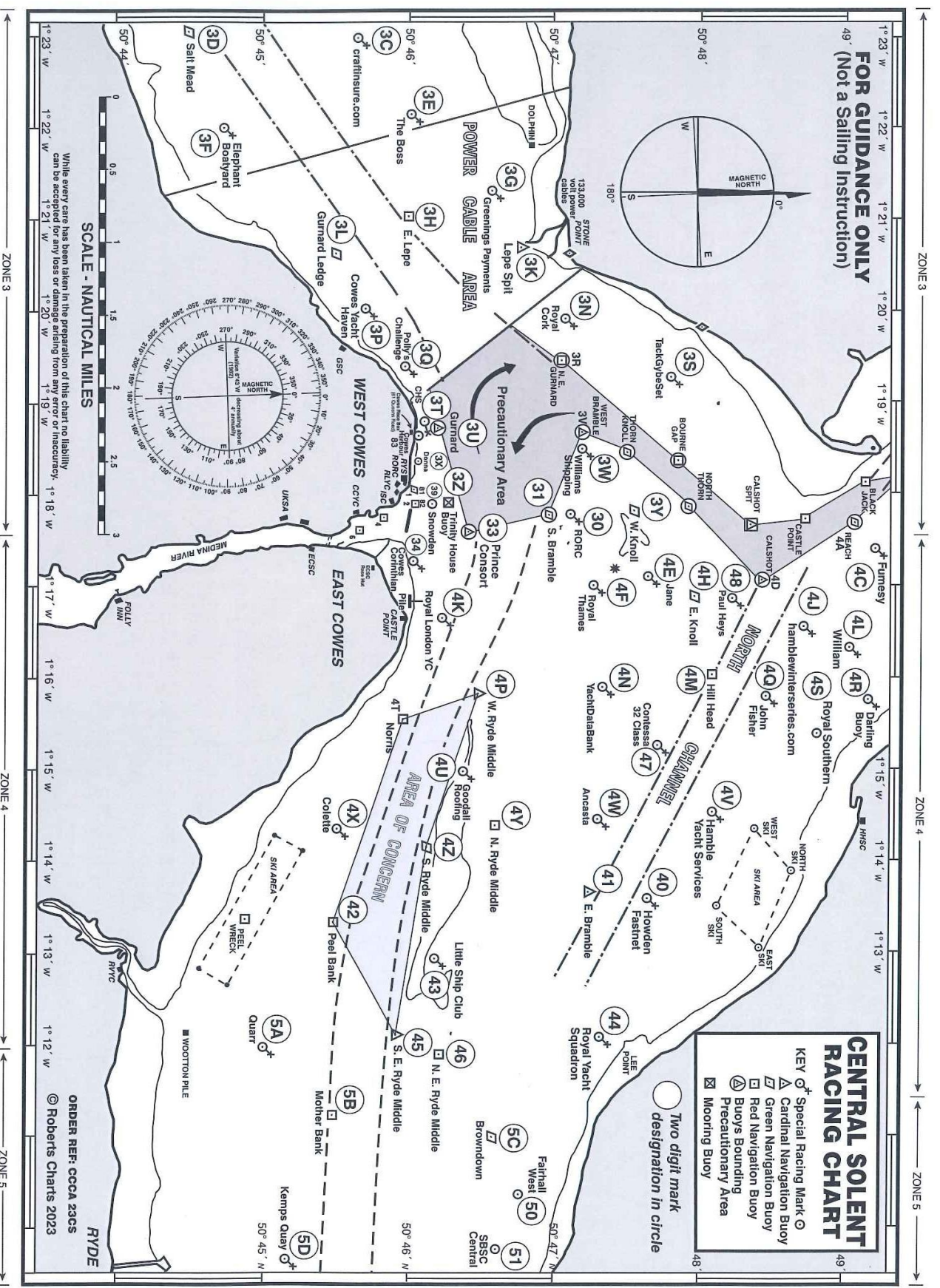
SCALE - NAUTICAL MILES



CENTRAL SOLENT RACING CHART

KEY

- Special Racing Mark
- △ Cardinal Navigation Buoy
- ▽ Green Navigation Buoy
- ◻ Red Navigation Buoy
- Buoy Bounding
- ⊠ Precautinary Area
- ⊞ Mooring Buoy
- Two digit mark designation in circle



While every care has been taken in the preparation of this chart no liability can be accepted for any loss or damage arising from any error or inaccuracy.

ORDER REF: CCGA 23CS
© Roberts Charts 2023

ZONE 3

ZONE 4

ZONE 5

ZONE 3

ZONE 4

ZONE 5

